

Electrical:

Impedance: 50 ohm

Voltage Rating: ≥ 500 V rms (Depending on cable)

Insulator Resistance : ≥ 5 G Ω

Dielectric Withstanding Voltage : 1000 V rms

Contact Resistance : Center Contact ≤ 3 m Ω .

Outer Contact ≤ 2.5 m Ω

ITEM	Description	Material	Finish
1	Body	Brass	Finish 1/3
2	Insulator	PTFE	None
3	Inner Contact	BeCu	Finish 1/2

Mechanical:

Mating : 1/4-46 UNS Screw-on Coupling

Recommended Mating Torque : 7.1~9.7lbs

Coupling Nut Retention Force : ≥ 60.7 lbs

Environmental:

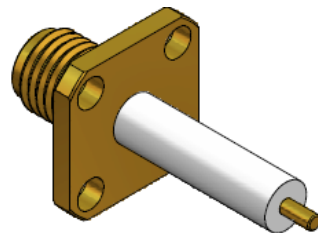
Temperature Range : -65°C to 165°C

Corrosion (Salt Spray) : MIL-STD-202, Method 101, Cond.B

Thermal Shock : MIL-STD-202, Method 107, Cond.B

Mechanical : MIL-STD-202, Method 213, Cond.I

Vibration : MIL-STD-202, Method 204, Cond.D



Finish: [Unit of Plating Thickness Is in Micro Inch(μ)]

1. Nickel Plating Thk. : 100 μ "min. (Under Plating)

2. Gold Plating Thk. : 5 μ "min. (Over Finish 1)

3. Gold Plating Thk. : 1~2 μ "max. (Over Finish 1)

Tolerances	Scale	Abbr.	Rev.	Part Number	F112-11602	
.X ± 0.2 .XX ± 0.1 .XXX ± 0.05	NTS	ST	B			
PAGE	All Dimensions in mm (Unless Otherwise Specified)			Date	2021/08/09	
1 of 1						