

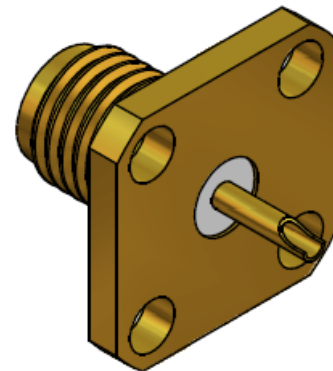
## Electrical:

Impedance: 50 ohm  
 Voltage Rating: 500 V rms (Depending on cable)  
 Insulator Resistance :  $\geq 5 \text{ G}\Omega$   
 Dielectric Withstanding Voltage : 1000 V rms  
 Contact Resistance : Center Contact  $\leq 3 \text{ m}\Omega$   
 Outer Contact  $\leq 2.5 \text{ m}\Omega$

ITEM	Description	Material	Finish
1	Body	Brass	Finish 1/3
2	Insulator	PTFE	None
3	Inner Contact	BeCu	Finish 1/2

## Mechanical:

Mating : 1/4-36 UNS Screw-on Coupling  
 Recommended Mating Torque : 7.1~9.7 lbs  
 Coupling Nut Retention Force :  $\geq 60.7 \text{ lbs}$



## Environmental:

Temperature Range : -65°C to 165°C  
 Corrosion ( Salt Spray ) : MIL-STD-202, Method 101, Cond. B  
 Mechanical Shock : MIL-STD-202, Method 213, Cond. I  
 Vibration ( HF ) : MIL-STD-202, Method 204, Cond. D  
 Thermal Shock : MIL-STD-202, Method 107, Cond. B

## Finish : [Unit of Plating Thickness Is in Micro Inch(μ)]

- Nickel Plating Thk. : 100 μ" min. (Under Plating)
- Gold Plating Thk. : 5 μ" min. (Over Finish 1)
- Gold Plating Thk. : 1~2 μ" max. (Over Finish 1)

Tolerances	Scale	Abbr.	Rev.	Part Number	
.X ±0.2	NTS	ST	B	F112-11501	
.XX ±0.1					
.XXX ±0.05					
PAGE	All Dimensions in mm (Unless Otherwise Specified)			Date	
1 of 1				2021/08/16	