



*Prece*

Where we believe you are a priority



# Company Overview

A global manufacturer of high-reliability electronic connectors and cable assemblies for use in various applications.

## Key products include

- RF Coaxial Cables
- RF Cable Assemblies
- RF Coaxial Connectors
- Microwave Components

## OUR VISION STATEMENT

IPRECE will be a global partner and world-class provider of the best innovative solutions.

## OUR MISSION STATEMENT

- Provide high-quality and affordable radio frequency communication products
- Engage in select strategic markets for today and tomorrow
- Engage all supply chain stakeholders toward complete solutions

# What We Do For You

- A global manufacturer of high-reliability electronic connectors and cable assemblies for use in various applications.
- Safety Package with Blister Box+Carton or PE bag+Carton ensure products are not subject to wear and tear in transportation. Quick delivery by express to arrive in a week.
- Approved by ISO 9001 quality management system. Standardized management of the production process and QC will check quality both in production and before delivery
- We provide after-sale service and technical support after shipment. OEM and ODM are all available for your customized requirements.

manufacturing



quality control



fast delivery



other service



# Applications

Most IPRECE Products are deployed in locations where their performance is depended upon to carry vital data between sensitive and high-performance equipment, 365 days a year, such as Broadcast, Security, Telecommunications, Medical, or Defense applications.

● Railway Transportation System



● Aerospace



● Broadcast



● Defence



● Data



● Automotive



● Medical



● Telecoms



# RF Connectors

## BNC



50 | 75 ohm  
15 | 12 GHz

- Features a bayonet coupling system for quick connect/disconnect in a full range of PCB and cable mount configurations.

## SMA



50 ohm  
18 GHz

- High-performance series featuring a threaded, compact design; ideal for antenna and base station applications.

## N-Type



50 | 75 ohm  
11 | 1.5 GHz

- Durable medium-sized RF interconnect with threaded coupling mechanism used in high-power antenna applications.

## TNC



50 | 75 ohm  
11 | 1 GHz

- Versatile miniature, threaded and waterproof interconnect available in standard and reverse polarity.

## MCX



50 | 75 ohm  
6 | 3 GHz

- Secure and easy snap-on/snap-off coupling with low reflection and broadband capabilities.

## MMCX



50 ohm  
6 GHz

- Micro-miniature interconnect featuring secure snap-on/snap-off coupling system.

## SMPM



50 ohm  
65 GHz

- Micro-miniature, high-performance board-to-board and cable-to-board interconnect solution.

## SMB



50 | 75 ohm  
4 | 1 GHz

- Snap-on coupling mechanism; ideal for GPS, LAN and broadband applications.

## SMC



50 | 75 ohm  
6 | 1 GHz

- High-performance, compact design; ideal for telecomm and instrumentation applications.

## SMP



50 ohm  
40 GHz

- Dependable, high-frequency interconnect commonly used in board-to-board applications.

## 1.0 / 2.3



50 | 75 ohm  
10 | 2 GHz

- Push-pull coupling system for quick installation and positive locking.

## Mini UHF



50 ohm  
2.5 GHz

- Low cost, threaded interface ideal for low-frequency applications such as PA and ham radio.

# Coaxial cable

IPRECE offers a broad range of connectors designed to terminate to many commercially available coaxial cable types. They are constructed using a low or ultra-low density PTFE dielectric offering excellent loss, outstanding phase stability, and unsurpassed flexibility-all without sacrificing mechanical integrity. Every cable assembly is tested for insertion loss and VSWR and shipped with an individual test plot.

**RG 6**



**RG 11**



**RG 58**



**RG 59**



**RG 179**



**RG 213**



**RG 223**



**RG 400**



**RG 316**



**RG 142**



**RG 174**



**RG 179D**



**1/2 cable**



**1/4 cable**



**7/8 cable**



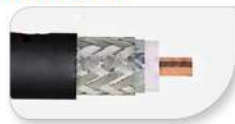
**1-5/8 super cable**



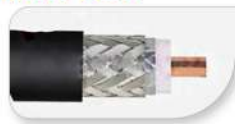
**LMR400 D**



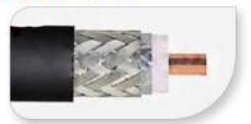
**LMR500**



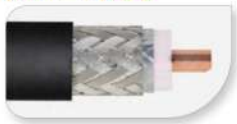
**LMR 600**



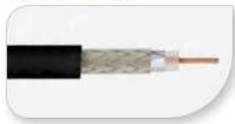
**LMR 900**



**LMR 1200**



**LMR 100**



**LMR 195**



**LMR 240**



**LOW LOSS LHS**



**LOW LOSS LHF**



**LOW LOSS LCS**



**LOW LOSS LCF**



**LOW LOSS LLF**



**LOW LOSS LLS**



**LOW LOSS UHF**



**LOW LOSS UHS**



# RF Cable Assemblies

Standard and Customized RF Cable Assemblies pre-assembled for flexible and Semi-rigid cables. To satisfy your special need with a small MOQ and Competitive price.

## ● Customized Length

The length of cable is flexible based on your application

## ● Variety of Cable Options

Almost all RF Coaxial Cables is available For your choice.

## ● Customized Connectors Available

Almost all RF Coaxial Cables is available For your choice.

## ● Full Inspection

To ensure all products you received can be used normally, we inspected them all before delivery

## ● 12 Months Quality Insurance

We will take charge of all quality issues for 12 months after you received bulk orders



# Production Process

The main process to make the RF connector products contain 6 steps:



1

## Prepare material

We Purchase Raw Materials from reliable vendors and all materials can meet the ROHS Standard.

2

## Make Metal Parts

Make metal body and center contact by lathe, Molding and stamping process.

3

## Metal Plating

Metal body send for plating process for corrosion Protection.

4

## Make Plastic Parts

Produce the Plastic case and insulators for RF connector by lathe or injection molding.

5

## Assembly

Connector components will be assembled together tightly to ensure durability in using.

6

## Test & Inspection

Before package, we test the performance our products to ensure high quality.



# Production Process

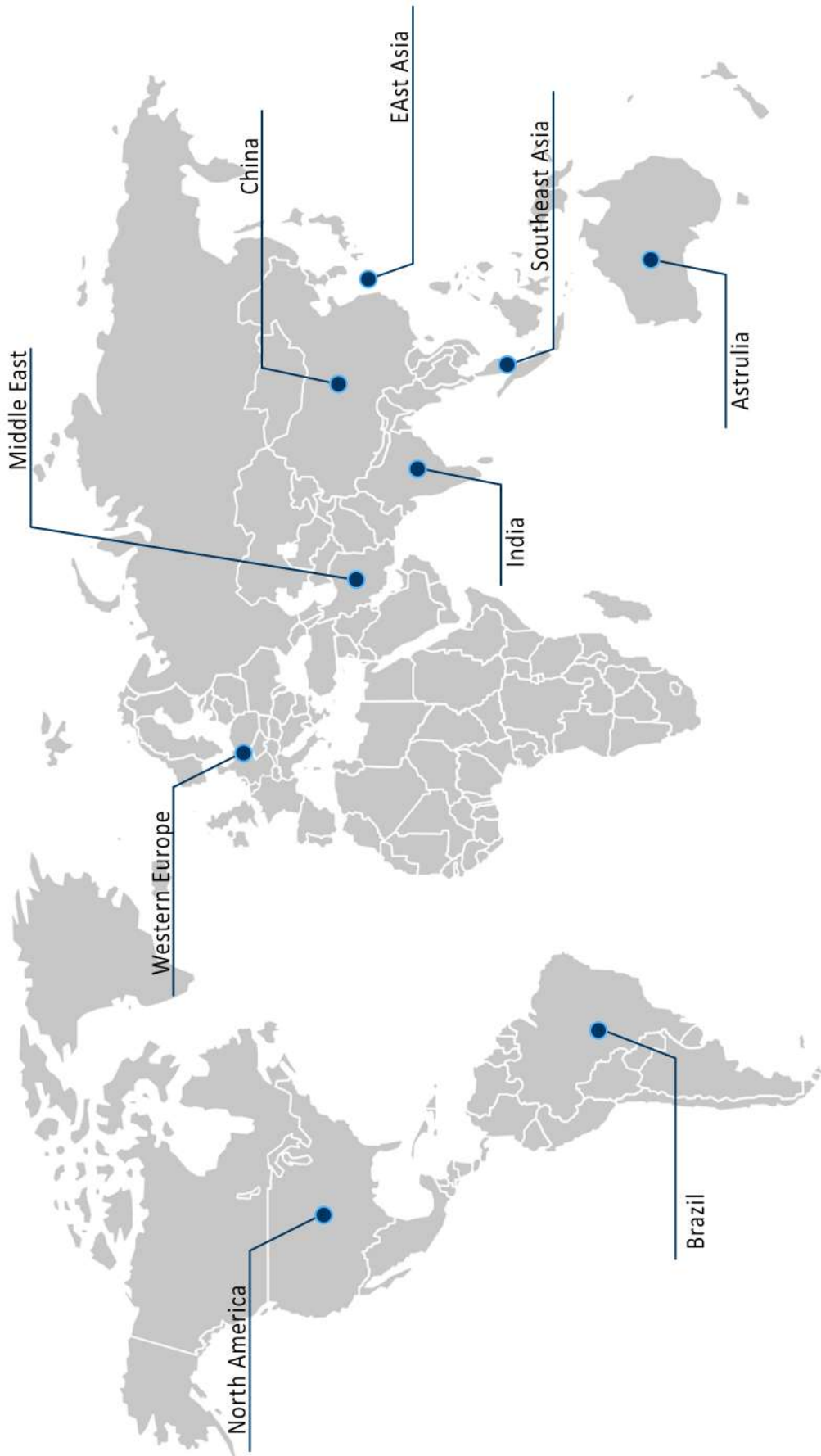


## RF connector assembly line

- IPEX assembly machine
- Automatic coaxial cable cutting and stripping machine



# Our main markets



# Why Business With Us?

We offer **FREE sample** for test before your bulk order



## Experienced Team

With more than 30 years' experience in RF Connector Industry, our team is devoted to help you with any question and offer you professional suggestions.



## Promote Delivery

DHL, Fedex, UPS, TNT, EMS are all available to ensure that you get our products in one week. Ocean shipping is also OK for bulk order with much lower cost.



## OEM/ODM Available

Our great technical team is always ready to help you make custom product. Offer you the most workable suggestion for performance, material and production solution.



## Quality Insurance

12 months quality assurance and good quality which pass the ISO 9001 standard. All products will be inspected before shipment to ensure your 100% satisfaction.



## Small MOQ Acceptable

Small quantity order accepted to help you reduce risk and test market quickly. And we are so delighted to develop long term commitment with your business together.



## Safety and Eco-friendly

All products are made according to the ROHS standard. We make sure all items sold globally would be safe to your customer.



## Contact Information

CHINA (Headquarter)

 No.230, Qianjin 2nd Rd, Baoan, Shenzhen, Guangdong Province, China.

 [info@iprece.com](mailto:info@iprece.com)

 +86 - 13544026014

 [www.iprece.com](http://www.iprece.com)