

## Frequency:

Frequency range: DC ~27 GHz

VSWR: 1.15: 1 (max)

## Electrical:

Impedance: 50 ohm

Insertion Loss : 0.26 dB (max)

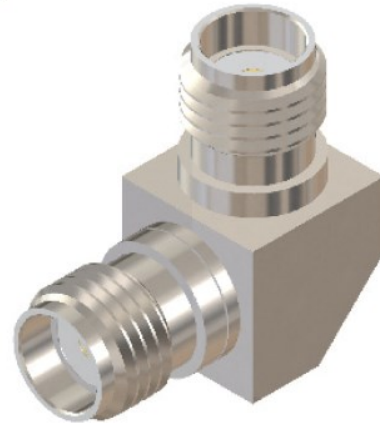
Durability:  $\geq 500$  Times

## Material & Finishes:

Housing : SU303F Polished & Passivated

Center Contact: Beryllium Copper/Gold Plated

Insulators: PTFE



## Notes:

1- The overall contour may be slightly changed per terminating with different cable and we reserve right to change it without notice.

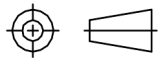

2- Any changes for interface dimensions are strictly prohibited.

3- The Material and plating are in various options per customer's request.

4- A complete information for connectors is available upon request.

## Environmental:

Temperature Range : -55°C to 165°C

Tolerances	Scale	Abbr.	Rev.	Part Number	AD03-101W	
.X ±0.2 .XX ±0.1 .XXX ±0.05	NTS	ST	B			
PAGE	All Dimensions in mm (Unless Otherwise Specified)			Date		
1 of 1				2021/05/10		