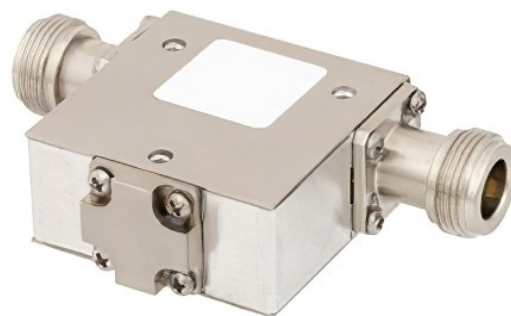


Features	Applications
<ul style="list-style-type: none"> 2 GHz to 4 GHz Max Power 10 Watts (CW) Insertion Loss < 0.6 dB Isolation > 18 dB VSWR < 1.3:1 	<ul style="list-style-type: none"> Test and Measurement Microwave Radio Systems Military Applications Commercial Communication Wireless Telecoms

Description	Min	Typical	Max	Units
Frequency Range	2		4	GHz
Impedance		50		Ohms
Isolation	18			dB
Insertion Loss			0.6	dB
Main Line VSWR			1.3:1	
Forward Power, CW			10	Watts
Reverse Power, CW			10	Watts

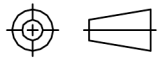
Mechanical Spec:

Design	Single Junction
Direction	1 to 2
Package Type	Connectorized
Connector 1	N Female
Connector 2	N Female



Environmental:

Operating Range : 0°C to +50°C

Tolerances .X ±0.2 .XX ±0.1 .XXX ±0.05	Scale NTS	Abbr. ST	Rev. B	Part Number I130-311P	
PAGE 1 of 1	All Dimensions in mm (Unless Otherwise Specified)	Date 2021/05/10			